

# THE PATRICK & JOAN LEIGH FERMOR HOUSE



ARIA HOTELS

## THE PATRICK & JOAN LEIGH FERMOR HOUSE

Welcome to the Patrick and Joan Leigh Fermor House, situated in Kardamyli, Southwest Peloponnese, Greece. In 1996 Sir Patrick and Joan Leigh Fermor bequeathed their home to the Benaki Museum with the express wish that the house would host intellectuals and scholars who wanted to work or study in an inspiring setting. The Leigh Fermors also granted the museum the right to rent the property for a period of three months per year. Under the alliance the museum will ensure the preservation of the house and its contents, and enable members of the public to have access to the property, while hospitality services will be provided by Aria Hotels, that specializes in the provision of authentic retreats in restored, historic Greek properties.

The Patrick & Joan Leigh Fermor House is considered one of the most beautiful properties in Greece. Within a Mediterranean garden of cypress trees, olive trees, fragrant shrubs, white oleanders and wild flowers rolling down to



the sea, stand three stone buildings: the Main House with three suites, the writer's studio right next to it, which is formed into the Traditional House, as well as the Guest House, adjacent to the Main House.

This historical house can be rented as a whole villa, the Main House, Traditional House and Guest House, to accommodate parties of up to ten people. The Traditional House & Guest House, each sleeping up to two people, and the Main House, sleeping up to six people. The property also features a Pool, Private Beach & Parking Area.

The restoration works at the building and the landscape surroundings, have been completed so that the original character of the property is meticulously preserved. Aria Hotels, in collaboration with the Benaki Museum, have undertaken operation of the property during the three-month rental period with particular sensitivity to its unique legacy, offering guests a rare residential experience of authentic Greek hospitality in an environment of immense charm and character.





## HISTORY

Sir Patrick Leigh Fermor (1915-2011), universally known as Paddy, was one of the most charismatic and adventurous personalities of the last century.

An author, scholar and decorated war hero, he is celebrated as one of the finest travel writers of his generation. As a member of the British Military Mission to Greece, he played a prominent role in the Cretan resistance during the Second World War.

He was a great admirer and lover of Greece. In the 1960s Leigh Fermor and his wife Joan chose to spend the rest of their lives in Greece and to build their home, lavishing much love and attention on it, in the idyllic coastal town of Kardamyli.



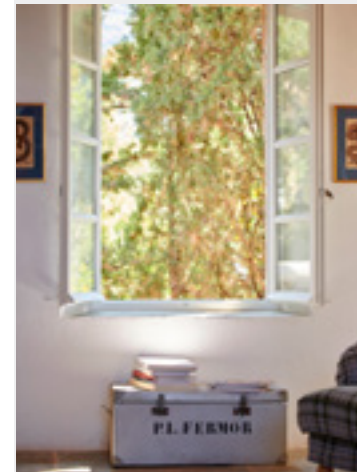
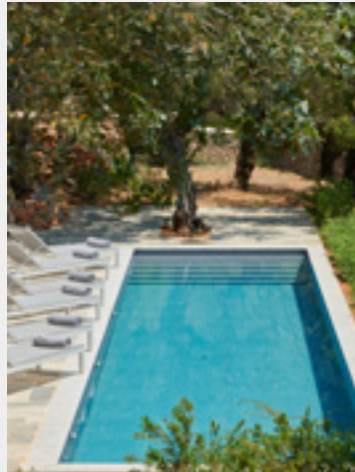
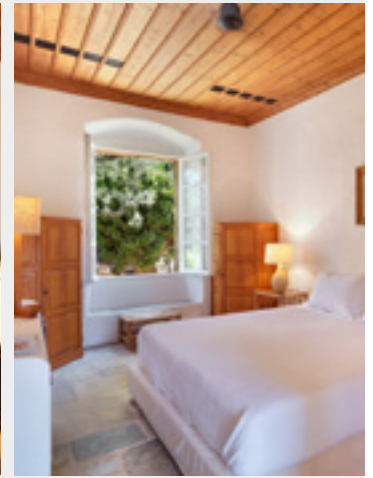
## THE LOCATION

The Patrick & Joan Leigh Fermor House, is located in the city of Kardamyli, Southeast Peloponnese, in Mani, only 38 km away from the city of Kalamata and 49 kms away from the airport of Kalamata.

In case you would like to reach the Patrick & Joan Leigh Fermor House by car, it is approximately 3,5 hours away.

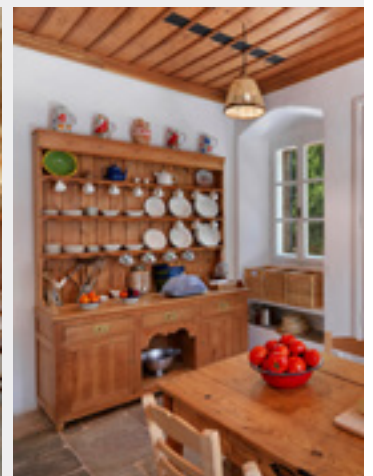




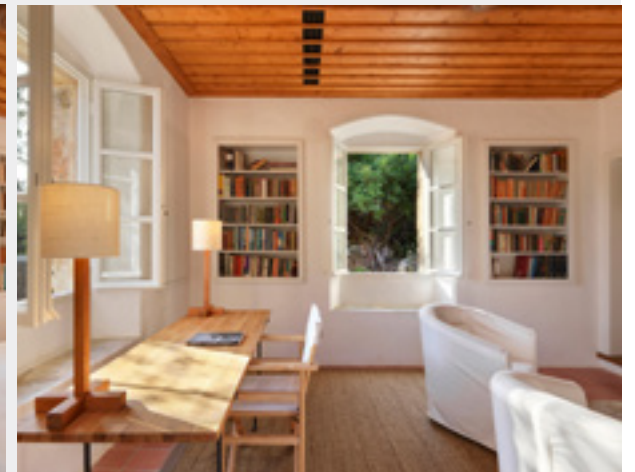


## MAIN HOUSE

The Main House is developed in two levels connecting with an external staircase. It comprises of 2 double en suite rooms of 43 & 30 sq.m., respectively. It has a fully equipped kitchen with dining area and common restroom. The living room features a magnificent fireplace along with the extraordinary garden views. The garden level comprises a one double en-suite bedroom (51 sq.m.) and a private veranda. The Main House can accommodate up to six people.







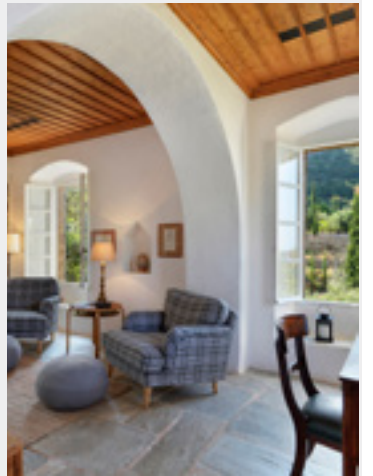
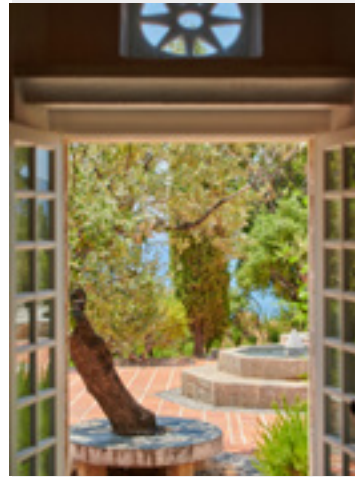
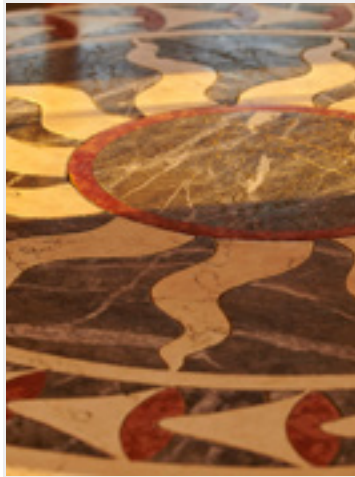
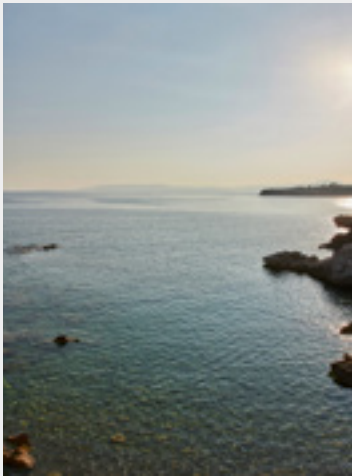
## TRADITIONAL HOUSE PATRICK FERMOR'S OFFICE

Adjacent to the Main House, the Traditional House, used to be the office of Paddy Fermor. The property features a private entrance, one double en-suite bedroom of 52 sq.m. and an open plan area, where Paddy's study desk along with the fireplace, are situated. The Traditional House also features a kitchenette and a private veranda with excellent garden & sea views. The Traditional House can accommodate up to two people.

## GUEST HOUSE

The Guest House is situated adjacent to the Main House. The property features a private entrance and offers one double en-suite bedroom 31 sq.m., a kitchenette and a private patio with garden views. The Guest House can accommodate up to two people.









# THE PATRICK & JOAN LEIGH FERMOR HOUSE

Kardamyli, Southwest Peloponnese, Greece  
Email: [info@ariahotels.gr](mailto:info@ariahotels.gr)  
Tel: +30 210 2207686



ARIA HOTELS

[ariahotels.gr](http://ariahotels.gr)