

KIPI SUITES



ARIA HOTELS

KIPI SUITES

Kipi Suites is an exclusive boutique hotel nestled in the magical network of mountains, valleys and rivers in Zagori in North West Greece. It is situated just half an hour away from Ioannina at the top of the ancient village of Kipi. Its eight luxurious suites and terraces offer panoramic views of the village, Mitsikeli mountain, Baya river and Milos – one of a network of bridges that links the many traditional villages in the area. Throughout the seasons Kipi Suites offers a perfect escape for lovers of nature and country living.

The hotel has been developed from two Zagori village houses dating from 1850 with a further three buildings added to blend perfectly with the original property. The traditional exterior facades have been carefully preserved while the interiors add a contemporary air. All materials used for the construction, renovation and maintenance of the Kipi Suites are environmentally friendly and special care has been given to energy and water conservation throughout the hotel.

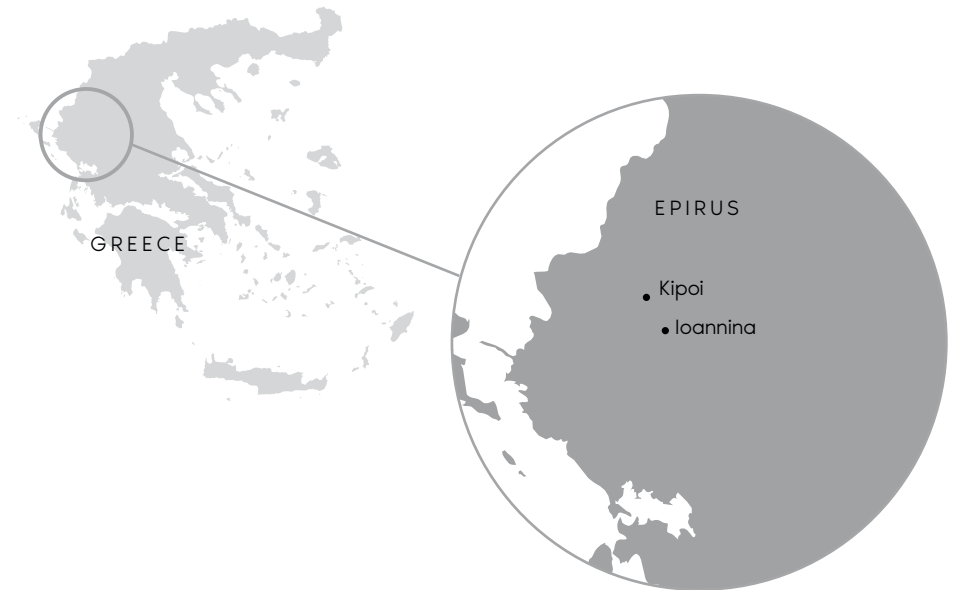
At Kipi Suites enter Zagori's magical world of mountains, rivers, ancient pathways and bridges linking the many local villages – each with its own distinct attraction.



THE LOCATION

Kipi village, at an altitude of 800m, lies just half an hour away from Ioannina.

Situated at the top of the traditional village of Kipi in Zagori, in a privileged location just a 100 of meters away from the central road, Kipi Suites offers panoramic views to the village, Mitsikeli mountain, Baya river and Milos stone bridge, while instantly creating a sense of calmness and relaxation.



LOADER



Kipoi Suites
Zagori | Ioannina

Visit [evloader.com](https://www.evloader.com)

Kipi Suites and Aria Hotels, by creating more sustainable tourism products are equipped with an active Electric Vehicle charging station, which is available for reservations at [evloader.com](https://www.evloader.com).



ACCOMMODATION

Eight different room & suite categories: Deluxe Rooms - Junior Suites - Executive Suites, named after the surrounding villages of Central Zagori, await you.

All rooms/suites have separate entrance, spacious living rooms, stunning views and one or two open fireplaces, while most enjoy a private terrace or balcony. The furniture is custom made and, along with designer fixtures and fittings provide a contemporary, minimalist result. Most suites feature a whirlpool bath.

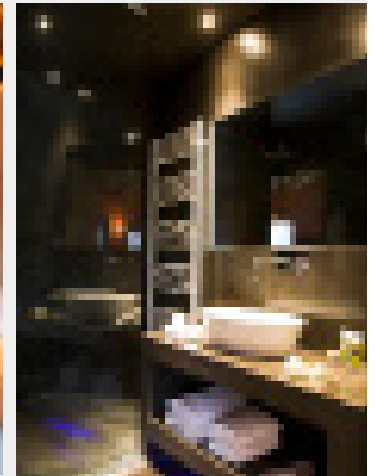
All rooms/suites are equipped with a mini bar, safe, iPod/Phone dock with loudspeaker, Nespresso® coffee machine, 32" HDTV and a hair dryer. The spacious bathrooms are fully equipped with top quality amenities, fluffy bathrobes and towels.

We take great pride in our breakfast and regard it as the most important meal of the day. Start your day with a glass of fresh orange juice and choose from the varied breakfast menu. All our delicacies are home-made, using fresh local ingredients.

Sample our selection of home-made marmalades, yoghurt, biscuits, desserts and pies that change daily. The breakfast menu is complemented by a wide selection of cheeses, cold meats, eggs, fruit and natural juices.

DELUXE ROOMS

Elafotopos Deluxe Room (35 sq.m.) is on one level featuring an en-suite living room with fireplace, a king size bed and a bathroom with shower. Koukouli Deluxe Room (35 sq.m.) is on one level with a private terrace, an en-suite living room, a fireplace, one king size bed and a bathroom with shower.



TWIN MAISONETTE

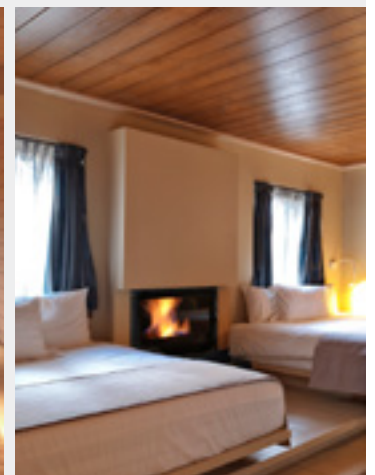
Dikorfo - Twin Maisonette (42 sq.m.) is arranged on two levels with two fireplaces (one on each level) and features two double beds and a bathroom with whirlpool bath.



JUNIOR SUITES

Ano Pedina Junior Suite (42 sq.m.) is on one level with separate living room, two fireplaces (one in each room), two queen size beds and a bathroom with a whirlpool bath.

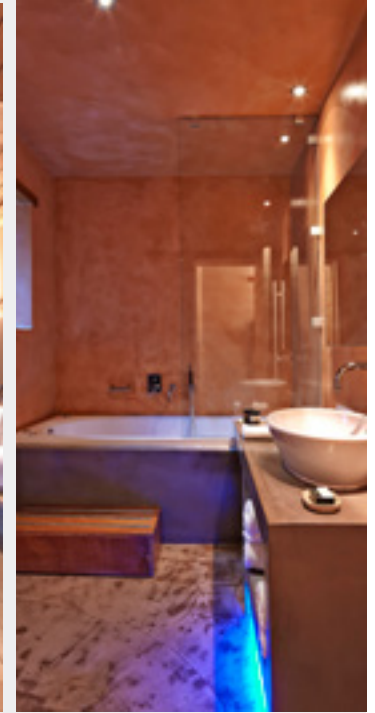
Kato Pedina Junior Suite (42 sq.m.) is on one level featuring a separate living room with fireplace, a king size bed and a bathroom with a whirlpool bath.



EXECUTIVE SUITES

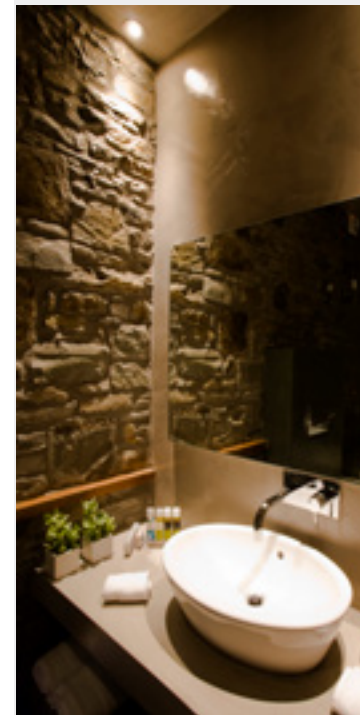
Vradeto Executive Suite (45 sq.m.) is on one level featuring an en-suite living room with fireplace, a king size bed and a bathroom with shower and a whirlpool bath.

Elati Executive Suite (45 sq.m.) is on one level and features a living room with fireplace, a king size bed and a bathroom with both shower and whirlpool bath.



MAISONETTE EXECUTIVE SUITE

Kapesovo Executive Suite (52 sq.m.) is arranged on two levels and features a separate living room with balcony, two fireplaces (one on each level), a king size bed and a bathroom with whirlpool bath.



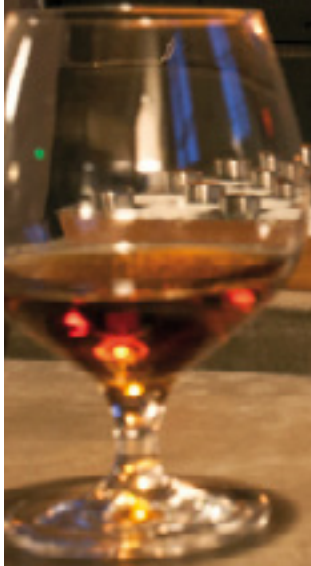


KIPI SUITES

Kipi, Zagori, Ioannina 44010, Epirus, Greece

Email: info@ariahotels.gr

Tel: +30 210 2207686, +30 26530 71995




ARIA HOTELS
ariahotels.gr