

# DIAPORI SUITES HOTEL



ARIA HOTELS

## DIAPORI SUITES HOTEL

Diapori Suites Hotel is a 4-star luxury, all-season hideaway, located just outside the village of Kardamyli, on the eastern shore of the Messinian Gulf, in the Mani peninsula of the Peloponnese.

The name of the hotel derives from its location. “Diapori”, means “a narrow waterway,” in Greek, and in this case refers to the tiny channel that separates the little peninsula where the hotel stands from the islet Meropi, a landmark for Kardamyli.

Nestled above the fishing harbor of Kardamyli in a spectacular natural setting, overlooking the vast expanse of the azure sea, with views of stunning sunsets, the hotel inspires an incredible sense of tranquility and relaxation!



## THE LOCATION

Kardamyli is a seaside village on the Gulf of Messinia 36 kilometers southeast of Kalamata, in the Mani Peninsula, on the outskirts of the majestic Mount Taygetos, with a reputation for attracting visitors seeking an alternative gateway to relaxation, inspiration and rediscovering the art of peaceful living.

Kardamyli, one of the seven superb villages offered to Achilles by Agamemnon to persuade him to rejoin the war against the Trojans, and also the only one still inhabited, it is a place full of contradictions, yet so perfectly harmonious that it creates a breathtaking feeling. It offers a perfect combination of sea and mountain, wild, yet tranquil nature, steep canyons and magical beaches, stone-built houses and light-bathed towers, silver-green olive groves and rocky shores, the towering mountain Taygetos and isolated little coves with turquoise waters.

Although the hotel is an ideal destination in itself, Kardamyli is a delight to discover. Surrounded by a lush escape of olive trees, pines and coniferous trees boasts a fascinating rocky shore with unexpected spots and beaches to enjoy the sea, while its winding trails invite you to explore the interior part of the region.



## ACCOMMODATION

Diapori Suites Hotel invites you to choose your personal retreat among a rich selection of delightful, generously-sized rooms and suites, 25 in total, that boast minimal design, warm and cozy interiors with calming natural hues and breathtaking sea and mountain views; all choices, each with a unique layout, manage to offer the intimacy of a discreetly luxurious home away from home.



### ROOMS

Unwind with the calming sound of the waves in the utter serenity of your spacious and private lodgings, with sea, mountain or garden views. Some of the rooms are designed for wheelchair access, while there is one wheelchair-accessible room that can be connected to a Classic room that accommodates a family of 4.

### SUITES

Spacious and minimally chic, our suites display a multitude of refined features to create a warm and cozy atmosphere to make you feel at home. Immerse yourselves in heavenly relaxation, and marvel at the golden sunsets, or fall asleep to the hypnotizing sound of the sea. All our suites have varied floor plans and offer different uninterrupted sea-front views, thanks to the elevated position of the hotel.

## CLASSIC DOUBLE ROOMS

Effortlessly elegant and luxuriously minimal, Classic Double Rooms (30 sq.m./322 sq.ft.) look out over the beautiful Mediterranean gardens of the hotel and offer distinguished accommodation for two. The room features twin beds that can be turned into double, with handmade comfortable mattresses, a large screen TV, an en-suite bathroom with a walk-in rainwater shower and a spacious, shaded, furnished private terrace.

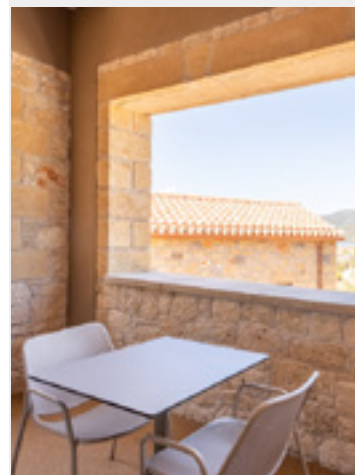
---



## DELUXE DOUBLE ROOMS

With a warm ambiance and modern earthy colors, Double Deluxe Rooms (30 sq.m./322 sq.ft.) boast tranquil sea and mountain views and invite guests to relax in style and luxury. Greet the day from the utter comfort of your Double Deluxe Room, equipped with twin beds that can be turned into double, with handmade comfortable mattresses, a large screen TV, an en-suite bathroom with a walk-in rainwater shower and a spacious, shaded, furnished private terrace.

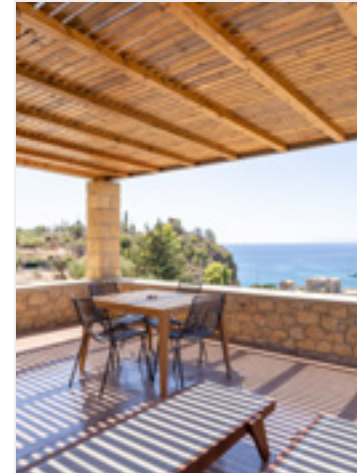
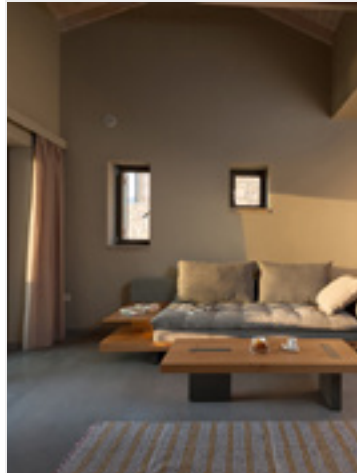
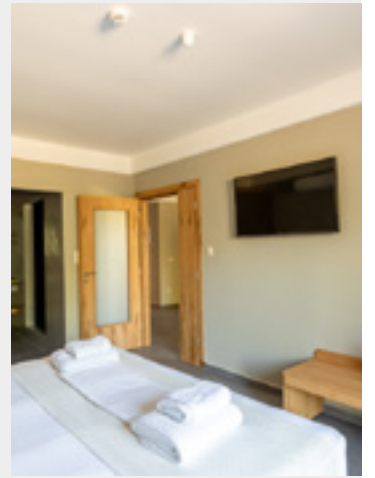
---



## COMFORT TRIPLE ROOMS

Spacious, with a quiet sophistication, on the garden level or on the first floor, Comfort Triple Rooms (35 sq.m./376 sq.ft.) offer peaceful sea and mountain views and evoke a feeling of comfort and ease. Light-filled and discreetly elegant, they can accommodate up to 3 adults and feature twin beds that can be turned into double with handmade mattresses, a comfortable sofa-bed, a large screen TV, an en-suite bathroom with a walk-in rainwater shower and a spacious, shaded, furnished private terrace.





## SUPERIOR SUITES

The Superior Suites (55 sq.m./592 sq.ft.), offer stunning sea views of the tranquil landscape surroundings, allowing guests to relax and rejuvenate. Comprising of a generously-sized master bedroom with a king-sized bed and an en-suite bathroom, that includes a walk-in rainwater shower, a separate living room with an ample living area with a sofa-bed, that also includes a second bathroom with rain-shower, these magnificent suites provide sweeping private furnished terraces, an indoor Jacuzzi or an outdoor bathtub, while some of them feature an energy-efficient fireplace.

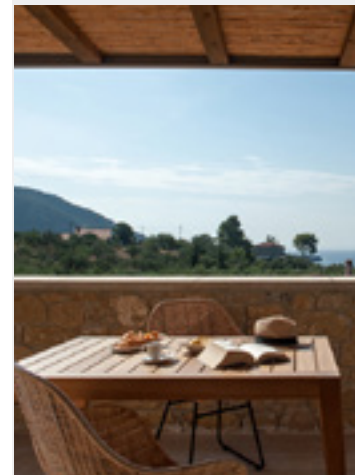
## FAMILY SUITES

Inviting and spacious, on the garden level or on the first floor, with serene sea and mountain views, our Family Suites (55 sq.m./592 sq.ft.), offer a separate master bedroom for the parents and unparalleled comfort for the family. The master bedroom comprises a king-sized bed or two twin beds with handmade mattresses, an en-suite bathroom with a walk-in rainwater shower, a separate spacious living area with one or two sofa-beds, a second bathroom with rainwater shower, and 2 large screen TVs –one in the bedroom and one in the living area – while a furnished terrace or balcony complete the experience. Ideal for families with children above 14.



## JUNIOR SUITE

Relax in this magnificent suite, while enjoying unobstructed sea views from your king-sized bed, or soak in your hydro-massage bathtub in your private terrace! Make yourself at home in the laid-back luxury of our uniquely-placed Junior Suite (40 sq.m./430 sq.ft. indoor area) with the astonishing view that features a spacious bedroom with a king-sized bed with a handmade mattress, an en-suite bathroom with an invigorating walk-in rainwater shower, custom-made furnishings, and a large-screen TV. A spacious, shaded, furnished private terrace with an outdoor hydro-massage bathtub and comfortable deck chairs invites you to enjoy the unparalleled sea view and relax to the sound of the waves breaking, while a serene side balcony boasts a table with two chairs.



## EXECUTIVE SUITE

This is our most exclusive suite, where guests can enjoy panoramic views from the expansive surrounding private outdoor terraces, roofed or open-to-the-sky! The Executive Suite (50 s.qm./538 sq.ft. with outdoor space of 100 sq.m./1,076 sq.ft.) features a king-sized bed with a hand-crafted mattress, an en-suite bathroom with an invigorating rainwater shower, custom-made furnishings, a large screen TV and a cozy energy-efficient fireplace for the winter nights. In the front a large secluded terrace with a hydro-massage bathtub inspires guests to spread out, unwind and admire the glorious sunsets, or snooze away on the deluxe sunbeds.

*\*Children above the age of 12 months are not allowed for security reasons.*



Kardamyli, Southwest Peloponnese, Greece

Email: [info@ariahotels.gr](mailto:info@ariahotels.gr)

Tel: +30 210 2207686



ARIA HOTELS

[ariahotels.gr](http://ariahotels.gr)