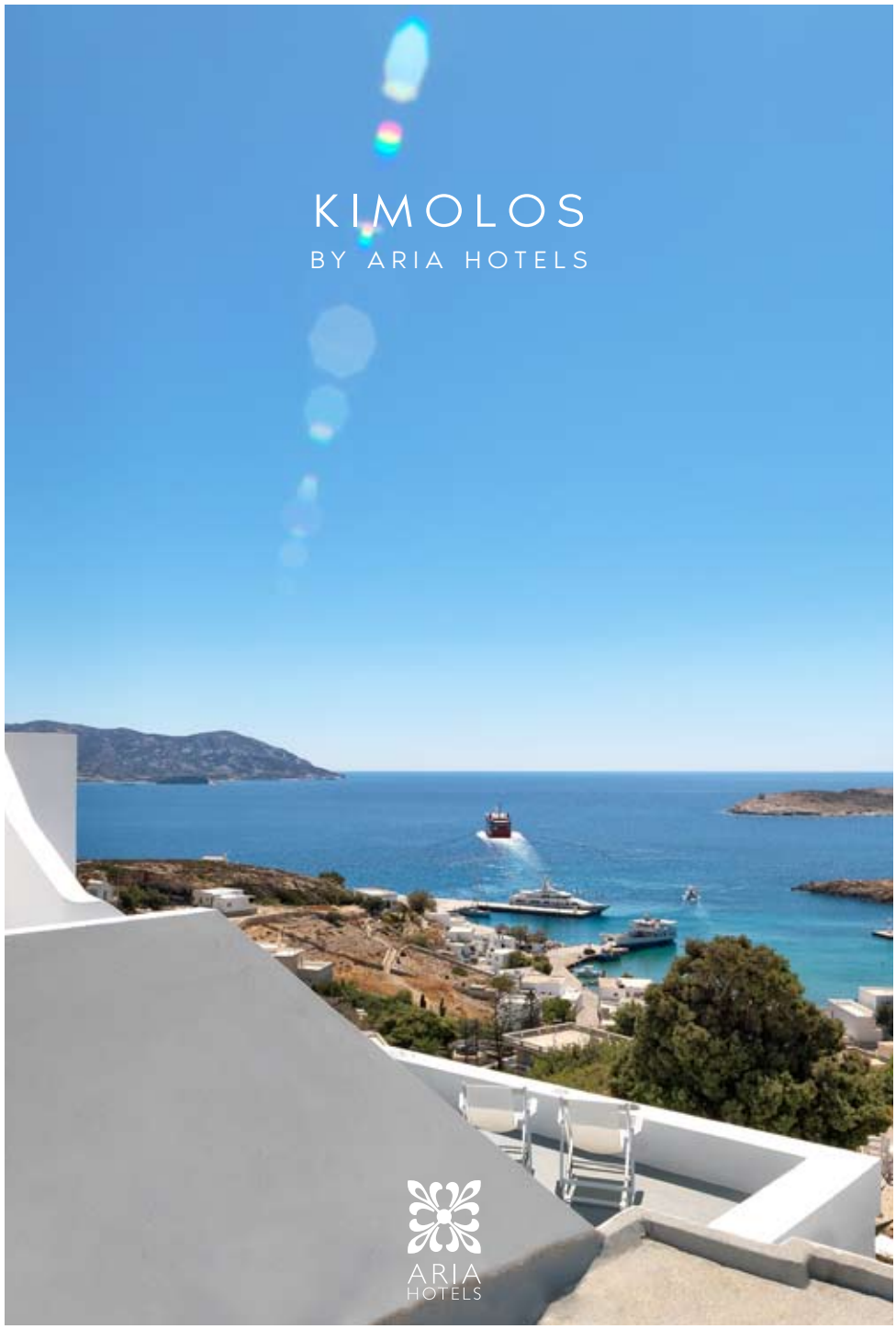


KIMOLOS
BY ARIA HOTELS

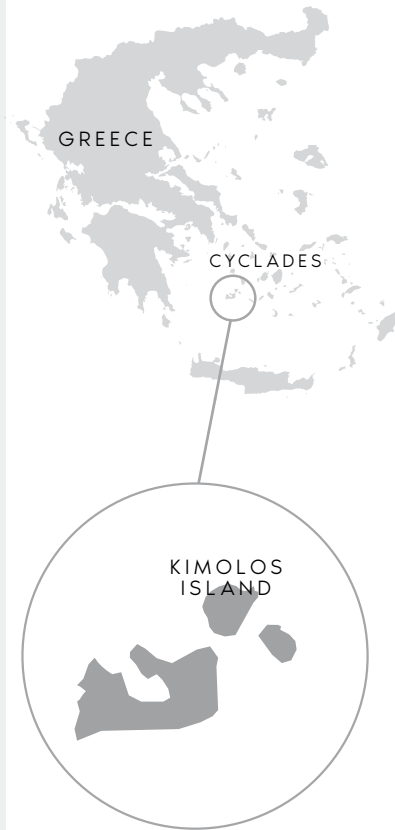


KIMOLOS ISLAND

The area of Kimolos island is 36 km² and the length of the coasts is 38 km with a lot of bays, sandy and rocky beaches and numerous sea caves. Its shape is an almost regular pentagon and the terrain is hilly with highest summit Paliokastro (365 m).

It has approximately 600 permanent residents, most of which live at Chorio where there is no great central square but several smaller ones like: Theoskepasti, Giorgila (with a well), Kambos (where the Children's Playground is), while, the largest one, of the School, has beautiful view and is ideal for someone to watch the full moon of August rising.

Smaller settlements that are inhabited mainly in the summer, while in the winter few of them have residents: Psathi (port), Goupa, Kara, Prassa, Aliko, Bonatsa and Dekas. Opposite the church of Odigitria there is the new Archaeological Museum and in the Castle the Folklore Museum.



To learn more about the island you can visit the Archaeological, Folklore and Maritime museums.

With the sea taxi you can tour the island and enjoy the beautiful beaches of the north side of the island.

If you enjoy trekking there are a couple of walking routes that take you to every corner of the island.

The Venetians and the Franks called the island "Arzantiera", that is Silvery, for the grey-white rocks they saw as they approached the island.

In contrast with most of the islands of Cyclades and consist mainly of transformed rocks, Kimolos is for the largest part the product of intense volcano activity as it lies on the outer zone of the volcanic arc of the Aegean and the traces of volcanic activity are visible all over the island: hot springs and unusual geological formations that create sites of extraordinary beauty.



THE WINDMILL KIMOLOS

The Windmill Kimolos Hotel dates from 1852 and remains one of the few traditionally restored windmills in Greece today. It has been recently renovated to create an elegant five-room hotel with modern amenities and facilities. The exceptional location, classic design and intimate scale, all combine to create a rare blend of exclusive, attentive service, against the stunning Aegean Sea backdrop.

Strogilo (30 m²) is arranged as a duplex on the ground and first floor. It offers a built-in double bed and one en-suite bathroom with shower on the ground floor, plus a separate bedroom with a queen-size bed on the upper floor. The two levels are connected by an internal stone staircase in an open plan space. Each room has its own entrance. The private large terrace on the first floor provides wonderful sea views.

Apagio (28 m²) comprises a bedroom with a built-in double bed and a living room with two sofas which can be turned into single beds. It has a bathroom with shower. While lying on the built-in sofas on the terrace you can also enjoy views of the port and the island of Poliegos.

Agnantio (19 m²) is located on the second floor and features a bedroom with a queen-size bed and an en-suite bathroom with shower. Its charming balcony, perched at the top of the mill tower, provides some of the hotel's best sea views.

Aloni (15 m²) features a bedroom with a built-in double bed and en-suite bathroom with shower. Its covered terrace with built-in benches provides the ultimate relaxing experience with wonderful sea views.

Apomero (20 m²) is located on the west side of the Windmill with its terrace offering views of the nearby village. It features a bedroom with a built-in double bed and en-suite bathroom with shower.

At the Kimolos Breeze you can savor local treats for breakfast or afternoon tea and other light snacks. After dusk, the moonlight casts its silver glow on the neighboring island of Poliegos that lies past the hypnotizing shimmers of the Aegean Sea. With a drink or a tasteful cocktail this lovely Café & Bar offers the ideal time for relaxation and reflection as the magical views are accompanied by soft music!



THE ELEPHANT BEACH HOUSE

The Elephant Beach House, is a two-person beach house, situated in the picturesque and colourful area of Sirmata Goupa on the secluded island of Kimolos in the Cyclades Islands.

The property is just one km from Psathi, Kimolos's charming port on the southeastern coast of the island. The beach takes its name from the distinctive elephant-shaped rock nearby.

The residence is a former "sirma" - a small cave-like dwelling dug into soft rock that was originally used to protect fishing boats from winter winds. The Elephant Beach House is the first sirma in the area to be transformed into a holiday residence. Another classic example of authentic Greek hospitality from Aria Hotels.

The Elephant Beach House, is a two-person beach house, situated in the picturesque and colourful area of Sirmata Goupa on the secluded island of Kimolos in the Cyclades Islands.

The Elephant Beach House (13 m²), can accommodate up to 2 people and comprises of a queen-size bed and a bathroom with shower. The ideal option for guests who reach the island of Kimolos by boat! Private sunbeds plus umbrella are provided on the beach.



THALASSA BEACH HOUSE

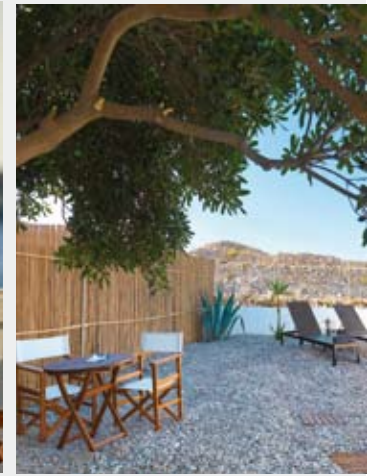
Welcome to Thalassa Beach House in Kimolos, located directly on the beach! Once used as a boat shed, this completely independent beach house, located on the beach of Zacharias, is the ultimate destination for a relaxing holiday!

Our Aria service team is on-hand to provide daily housekeeping, arrange car rentals, restaurant bookings, excursions and much more to make your stay on the beautiful island of Kimolos inspiring and memorable!

Thalassa Beach House is an independent vacation home, located right on the beach of Zacharias, equipped with all the modern amenities a self-catered property can offer!

Thalassa Beach House (40 m²) comprises of a fully equipped open kitchen, dining area, double bed, sofa-bed plus a bathroom with shower – all finished to a very high standard. A parking area is also available nearby.

On the veranda outside the house guests can enjoy uninterrupted sea views. Private deck chairs plus umbrella are provided on the beach.



BONATSA BEACH HOUSE

Bonatsa Beach House, just a few steps from the water's edge comprises three beautiful, newly furnished rooms, each with its own direct access to Bonatsa's enticing sandy beach.

Bonatsa is one of the most popular beaches of the island in summer months. There are a number of restaurants and taverns on the beach and in the immediate area serving fresh local cuisine.

Our Aria service team is on-hand to provide daily housekeeping and breakfast. We can also arrange car rental, restaurant bookings, excursions and much more to make your stay on the beautiful island of Kimolos inspiring and memorable!

Bonatsa Beach House, a quintessential Greek getaway, is a fully-equipped beach house with three en-suite bedrooms, each with direct access to Bonatsa's enticing sandy beach. It is furnished to the highest standards with luxurious COCO-MAT® beds in all bedrooms.

Ellinika is a recently refurbished triple room of 23 m², with one double COCO-MAT® bed, an armchair-bed and a fully renovated bathroom with shower, offering lovely views of the Bonatsa beach.

Petalida & Kalamitsi are recently refurbished double rooms of 22 m² each, with one double COCO-MAT® bed and a renovated bathroom with shower. Both offer wonderful views of the Bonatsa beach.

There is also B³ - Bonatsa Beach Bar, located just a few steps from the Bonatsa Beach House complex, at the southern part of Kimolos island. Guests can relax on a comfortable sunbed and enjoy a cold drink or a cocktail accompanied by a light snack, while gazing at the Aegean Sea. A large parking space is also available for guests & visitors.



MILAKI KIMOLOS

Milaki Kimolos is just a few minutes' walk from Psathi, Kimolos's port, and very close to 'Chorio', the island's charming principal village. This traditional, uncomplicated property comprises six rooms, all newly furnished, with COCO-MAT queen-size beds and (in the largest rooms) sofa beds, plus a bathroom with shower.

Our Aria service team is on-hand to provide daily housekeeping. We can also arrange car rental, restaurant bookings, excursions and much more to make your stay on the beautiful island of Kimolos inspiring and memorable!

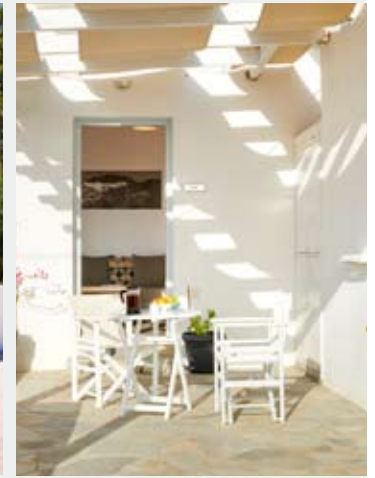
Milaki's six rooms have all been modernized and upgraded. They have new COCO-MAT® queen-size beds and (in the largest rooms) sofa beds plus a bathroom with shower.

Rema & Goupa (25 m²) are two refurbished double rooms at the front side of the complex, offering garden view and are equipped with a double COCO-MAT® bed and a bathroom with shower. Goupa also includes a single armchair bed.

Prassa (34 m²) is a refurbished family room for up to four people at the back side of the complex, offering mountain view. It is equipped with a double COCO-MAT® bed, a sofa-bed (130 x 190 cm), in open plan style, and a bathroom with shower.

Aliki (34 m²) is a refurbished family room for up to four people at the front side of the complex, offering garden view, and is equipped with a double COCO-MAT® bed, a sofa-bed (130 x 190 cm) in open plan style, and a bathroom with shower.

Soufi & Klima Superior Doubles are two carefully refurbished rooms with mountain view. Both rooms are equipped with a double COCO-MAT® bed, a single armchair bed and a fully renovated bathroom with shower.



ALIKAKI KIMOLOS

Alikaki Kimolos has been sensitively developed and updated to create three modern studio dwellings, perfect for visitors to Kimolos who enjoy the beach environment and island lifestyle. In the recognizable architectural style of these famous islands, each studio property offers spacious parking area, large garden and unique view of the sea with its sumptuous sunsets. All three studios come with patio space and shaded terraces for ultimate relaxation and serenity. Situated atop of a small hill, the Aliki beach, one of Kimolos's most beautiful sandy beaches is a few metres away!

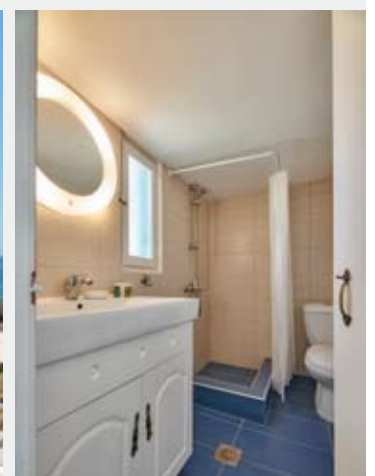
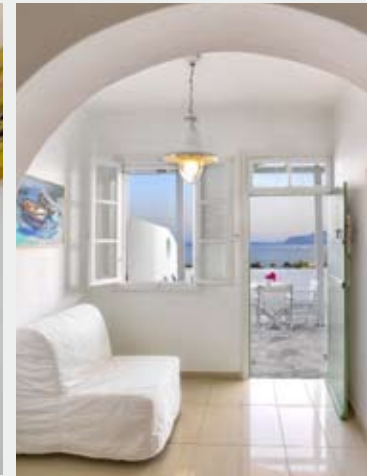
Each one of these unique studios has a fully-equipped kitchenette, bathroom with shower, and bedroom. Depending on the type, our rooms can comfortably accommodate up to four people. All three studios have been furnished to the highest standards with luxurious COCO-MAT® beds in all bedrooms. Private outdoor space includes patios and terraces, with a parking area also available on site.

The Aria team is also available to provide daily housekeeping as well as answering enquiries or offering suggestions that will make your visit to the island as memorable as it can be.

Mersini (42 m²) comprises a bedroom with double bed and a separate living room with one sofa bed and an armchair-bed, which can accommodate up to two people. It has a fully equipped kitchen and a bathroom with shower. The wonderful terrace allows the guest to indulge the beautiful surroundings of Aliki beach and the marvelous Cycladic environment!

Faros (29 m²) can comfortably accommodate three people. It features an open-plan bedroom with double bed, a single chair bed, a kitchenette and en-suite bathroom with shower. Its terrace with built-in sunbeds offers clear and open views of the sea and nearby island of Milos.

Fikiada (23 m²) is the most intimate and quaint studio of the Alikaki complex. It features an open-plan bedroom with double bed, armchair-bed, kitchenette and en-suite bathroom with shower. Its terrace with built-in benches is a perfect spot to unwind and take in the seascape.



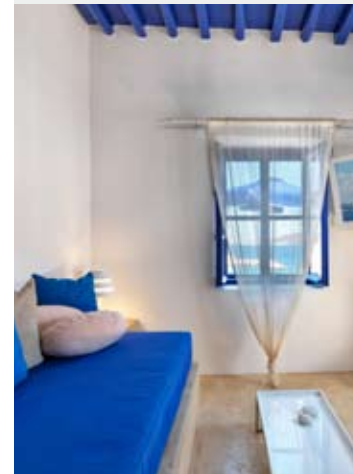
PSATHI BLUE

Designed for travellers who wish to experience the authentic life of this tiny volcanic island in an atmosphere that offers peace and tranquillity, Psathi Blue Alpha & Psathi Blue Beta are two traditional residences, just a few steps from Psathi, Kimolos's port. Both are equipped with all modern comforts and are perfectly integrated into the local landscape with a typical Cycladic architecture.

Psathi Blue Alpha, split into two separate buildings of 20 m², includes one bedroom, living room and bathroom and may accommodate two people. It also features two beautiful verandas, one of approx. 20 m² and a second smaller one (approx. 13 m²) with wonderful views over Kimolos port and Psathi beach. Psathi Blue Alpha can only be rented as a whole and is ideal for couples.

Psathi Blue Beta (30 m²) can accommodate up to three people in total in an open plan space, and features a kitchenette, a small furnished veranda of 4 m² as well as a spacious rooftop of 40 m² offering side view over Kimolos port and Psathi beach.

Public parking area is available at approximately 300 metres, for both of the residences. The Aria team is available for any further arrangements or suggestions that will make your visit to Kimolos island as memorable as it can be!



ARIA KIMOLOS RESIDENCE

Welcome to the Aria Kimolos Residence in the heart of Kimolos island!

Aria Kimolos Residence (50 m²) is located at the entrance of Chorio, Kimolos's picturesque principal village. This self-contained traditional holiday home is ideal for families or a group of friends up to four people in total and consists of two bedrooms (each with one double bed), a fully equipped kitchen, one bathroom with shower, a living room with couch and a dining area as well as a veranda with beautiful garden and sea views.

Aria Kimolos Residence is sensitively integrated into the local landscape with its typical Cycladic architecture and is the perfect choice for visitors who enjoy the uncomplicated island life.

Our Aria service team is on-hand to provide daily housekeeping and concierge services (e.g. car rental, restaurant bookings, excursions and much more) to make your stay on the beautiful island of Kimolos inspiring and memorable!



KAMBOS HOUSE

Kambos House is a historical property, located at the picturesque Kambos area, in the principal village of Kimolos.

This independent, traditional holiday home, is one of the oldest houses on the island of Kimolos. Centrally located in the main square, it is surrounded by shops and restaurants, in short walking distance of the island's nightlife. It offers beautiful views to the Kimolos village and combines traditional architecture with modern elements and comforts. Aria Hotels have maintained the property's historic, initial character and its traditional elements, with the restoration that took place during 2020, adding value to the house's cultural aspects.

Kambos House, is a two-person traditional house, situated in the picturesque and colorful village of Kambos, only a minute afar from Chora. The House has been carefully restored with respect to its legacy and equipped with all the modern amenities, a self-catered property can offer for a comfortable and unique stay!

Kambos House (30 m²) consists of one bedroom, a fully equipped kitchen, one bathroom with shower, a living room with a sofa and a dining area. This traditional property, offers a spacious backyard with a beautiful garden for relaxing moments.

During the remaining months, Kambos House will host exhibitions, cultural workshops and artists events, in this inspiring and historical ambiance.



KIMOLOS

BY ARIA HOTELS

Kimolos 84004, Cyclades, Greece

Email: info@ariahotels.gr

Tel: +30 210 2207686



ARIA
HOTELS

ariahotels.gr